



WARRANTY & GUIDELINES

Coastal Carolina Curbs, LLC is dedicated to providing top quality service to its customers. However, in order that our work be executed in an efficient and timely fashion, we require that certain guidelines be followed in regards to all custom decorative concrete installations.

CONCRETE CURBING INSTALLATION GUIDELINES

Outline of what to expect before, during and after curbing is installed.

Before Installation:

1. Ensure that your job site is easily accessible by our crew.
2. If you have a sprinkler system(s) installed on your property, please keep them turned off for at least 2 (two) days prior to installation.
3. Any preliminary groundwork, as well as large rock/boulder placements for landscaping purposes, needs to be in place prior to our arrival on site.
4. If there are sprinkler heads, sprinkler lines, cable television lines, or other items on your property that are buried, please mark them clearly. Coastal Carolina Curbs, LLC will not assume responsibility for any damage caused by our equipment or crew if buried items are not plainly marked.
5. If applicable, please pick up all pet excrement from the property and keep all pets indoors for the duration of the install.

6. The color of your concrete curbing will be determined by your choice from the Coastal Carolina Curbs, LLC color chart. Our color chart is a close representation of available concrete colors and is not meant to represent the exact color of the finished product.

During Installation:

1. Colors are added to our concrete in precise measurements to help ensure that the chosen color is as consistent as possible throughout the project; however, in some instances there may be slight color variations to the finished color.
2. While Coastal Carolina Curbs, LLC strives to leave every job site in a neat and clean state, there may be instances where excess concrete will be present around installation areas. These are usually found where the concrete has been started and stopped and/or along corners. This excess concrete is difficult to remove while wet, so once the concrete is dry and cured (after 24 hours) it can be removed by hand or broken up by foot, at which point it can be discarded or mixed in with your topsoil and/or mulch. Since we do not include a return visit in order to remove any excess concrete, we greatly appreciate your understanding of this process.
3. Once your installation is completed, our crew will obtain a final footage count using a measuring wheel. The measurements are made outside the curb line for accuracy.

After Installation:

1. Once your decorative curbing is completed, it will take approximately 24 hours for the concrete to set and cure. During this time period, it is important not to come into contact with the curbing and avoid exposing it to any moisture. If damage or discoloration of the curbing is determined to be caused by the aforementioned, the product will not be covered under our warranty.

2. Protect your curbing by asking neighbors and family members to keep a safe distance from the curbing as well as keeping pets away. The curbing will be hard to the touch after the initial 24 hour period; however, it takes several days for it to completely cure. Please refrain from touching the curbing with your body and/or objects before the two day period has passed.
3. To avoid excessive moisture from interfering with the curing process and possibly causing the concrete to appear blotchy, please keep sprinklers off for at least 2 days following the installation as well as pausing irrigation and/or backwash from pool areas, etc. If rain happens to occur within 8 hours after installation, you should attempt to cover the curbing with plastic.
4. Landscape work should be halted for at least 48 hours after installation as edging, mowing, shoveling, and the use of wheelbarrows can cause damage to your curbing while it is fully hardening. It is advised that the aforementioned lawn equipment be used with caution for at least two weeks after installation.
5. If your curb sustains any form of unwarranted damage immediately after the installation crew has left, Coastal Carolina Curbs, LLC will return and make the necessary repairs; however, there will be a \$75.00 minimum charge for this service. Please keep in mind that while we will attempt to make the repair as seamless as possible, it will most likely not look as uniform as the initial install.
6. Concrete curbing that is colored may sometimes have a splotchy appearance for approximately a month while it is curing. This is normal and will subside once it is fully cured. Because of the water content inside the concrete as it is laid down, it will appear darker and then lighten as it fully dries and cures.
7. If you routinely spray various fertilizers and/or chemicals on your lawn and flowerbeds, please be aware that there is a chance they can stain your decorative concrete curbing. If this

occurs, hose down the concrete with water to help avoid any discoloration.

8. Concrete is a substance that is naturally disposed to cracking. In order to greatly reduce cracks from occurring in more visible areas of our decorative curbing, Coastal Carolina Curbs, LLC installs control joints in the curbing roughly every 2 to 4 ft. depending on the layout. This process helps to control where possible cracking will occur. Because of this method, if a crack does occur, it will most likely happen in one of the control joints and therefore would not be covered by our warranty. Coastal Carolina Curbs, LLC experiences very few instances of cracking in its decorative concrete curbing; however, if a crack does occur outside a control joint and it is deep enough, we will repair it under our one-year warranty; unless it is determined to have been caused by unwarranted actions such as lawn equipment and/or vehicles being driven into/over it.

NOTE: Making repairs to colored concrete proves to be a difficult process due to the fact that it is not feasible to achieve a perfect color match to the surrounding curbing.

Warranty Information

Coastal Carolina Curbs, LLC offers a one-year warranty against defects in materials and workmanship.

If any areas of the job are questionable, our crew will either repair or replace the curbing at no charge if it is determined that the materials used and/or the installation process was the cause of the defect.

ITEMS NOT COVERED

Cracking & Breakage

1. Cracking of curbing due to natural ground settlement beneath the curbing. If your curbing contains a significant crack outside a control joint (see images p. 8), it must be large enough to insert a quarter down inside the crack in order for Coastal Carolina Curbs, LLC to warrant that section of your curb be replaced.
2. Cracking and/or breakage of curbing due to any equipment or vehicles driven into and/or over the curbing.

Color Accuracy & Consistency

1. Coastal Carolina Curbs, LLC color chart is a close representation of available concrete colors and is not meant to represent the exact color of the finished product(s).
2. Coastal Carolina Curbs, LLC always does its best to ensure that colors chosen for each curbing project is as consistent as possible; however, in some cases there may be slight color inconsistencies to the finished curbing. This is due to slight variations in the pigments used to color the concrete and finished curbing may not match our color chart exactly. Therefore, Coastal Carolina Curbs, LLC does not guarantee complete color consistency throughout a project.
3. Color can be adversely effected by excess moisture coming into contact with the finished curbing. If sprinklers are found to have been turned on 2 (two) days prior and/or after installation, Coastal Carolina Curbs, LLC will not warrant color defects. If the curbing color appears to be washed out, blotchy, and/or has light or dark areas present, it is most evidently due to the fact that the curbing has been exposed to excess moisture after installation has been completed. In such cases of determination, Coastal Carolina Curbs, LLC will not honor any repairs and/or replacements.

4. As stated above in item #1, the color(s) chosen from our color chart will have some acceptable color variation relative to the finished product. Any claims of incorrect color application and/or absence of any color in the curbing can be evaluated only after a 30 day period after final installation.

Stamped & Embossed Curbing

1. The stamping and embossing process may result in some color variation, fading, and hairline/spider cracking.
2. Stamping and embossing of the concrete may also vary from project to project.

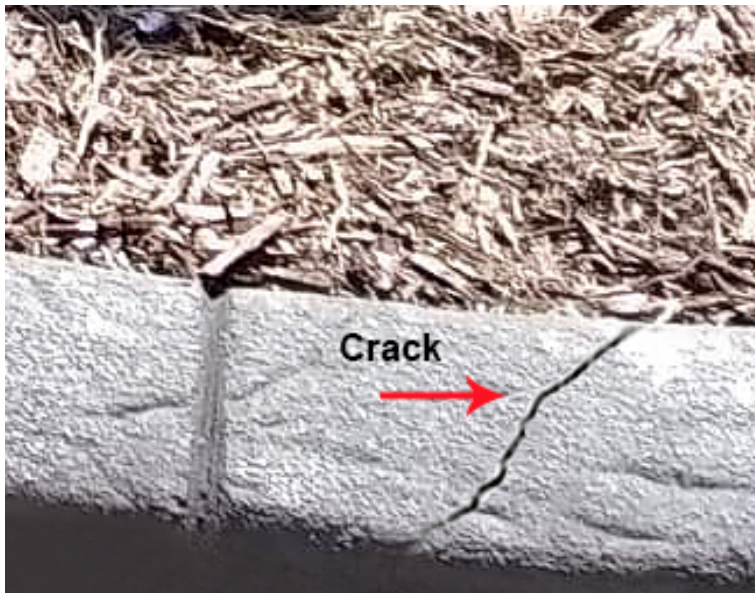
CRACKS

Concrete is a substance that is naturally disposed to cracking. In order to greatly reduce cracks from occurring in more visible areas of our decorative curbing, Coastal Carolina Curbs, LLC installs control joints in the curbing roughly every 2 to 4 ft. depending on the layout. This process helps to control where possible cracking will occur. Because of this method, if a crack does occur, it will most likely happen in one of the control joints and therefore would not be covered by our warranty.

Coastal Carolina Curbs, LLC experiences very few instances of cracking in its decorative concrete curbing; however, if a crack does occur outside a control joint and it is deep enough, we will repair it under our one-year warranty; unless it is determined to have been caused by unwarranted actions such as lawn equipment and/or vehicles being driven into/over it.

NOTE: Making repairs to colored concrete proves to be a difficult process due to the fact that it is not feasible to achieve a perfect color match to the surrounding curbing.

Crack Covered by Warranty



This image shows a crack that is wide enough to accommodate a quarter. This crack should be repaired under our one-year warranty, unless it is determined to have been caused by unwarranted actions such as lawn equipment and/or vehicles being driven into/over it.

Crack Not Covered by Warranty



This image shows a crack that has occurred along one of the curbing's control joints. Therefore, this crack is not covered by our warranty.